

NATS' GALLERY: Spring 2013



Jelly Ear *Auricularia auricula-judae* is particularly common on Elder but occurs on many other trees too.



An oyster or oysterling fungus growing bracket-like from wood but clearly a gill fungus as seen from below.



Wrinkled Crust *Phlebia radiata* is one of the many resupinate or crust fungi which grow tightly appressed to dead wood.



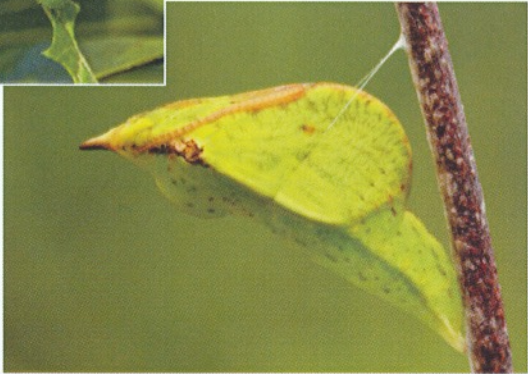
Above: **Purple Jellydisc** *Ascocoryne sarcoides*. Unlike other fungi on the page, this is an ascomycete, capable of shooting its spores out of microscopic tubes for the wind to disperse them.



Left: **Velvet Shank** *Flammulina velutipes*. One of the few gill fungi to produce fruiting bodies during the winter months

Photos: Jenny Kelly

BRIMSTONE BUTTERFLY LIFECYCLE



Photos:
Mike Gasson





ABNORMAL PLUMAGE

A white **Starling** has been a regular visitor to Brian Macfarlane's garden.

Photo:
Brian Macfarlane.



Left: A **Blackbird** with unusual breast plumage.

Photo: Tony Howes

Andrena nitida, one of five species of solitary bee observed taking nectar from Alexanders.

Photo: Nick Owens



The **Silver-washed Fritillary** appears to be establishing a breeding population in Norfolk.

Photo: Mike Gasson

This **Red Deer** stag was photographed at Snettisham Deer Park using a low branch to scrape 'velvet' off its antlers.

Photo: Sylvia Fairhead

